



INCUBATION CENTER

**GOVERNMENT COLLEGE JAITHARI,
DISTRICT- ANUPPUR (M.P.) INDIA**

POLICY

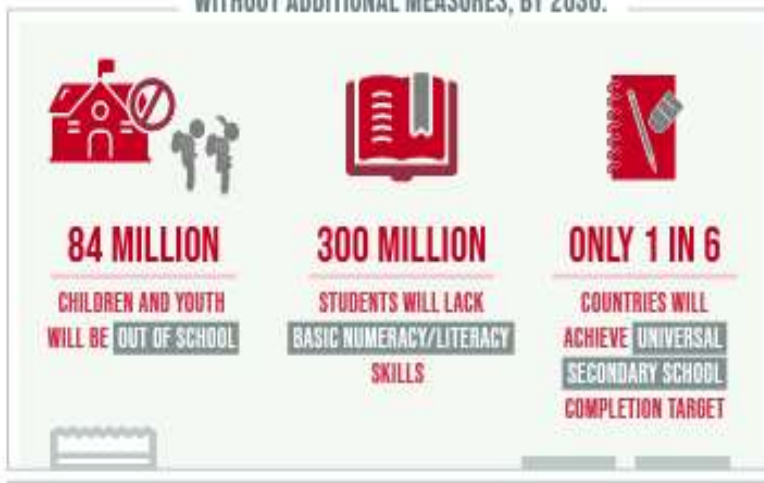


ENSURE INCLUSIVE AND EQUITABLE QUALITY EDUCATION AND PROMOTE LIFELONG LEARNING OPPORTUNITIES FOR ALL

DESPITE SLOW PROGRESS,

THE WORLD IS FALLING FAR BEHIND IN ACHIEVING QUALITY EDUCATION

WITHOUT ADDITIONAL MEASURES, BY 2030:

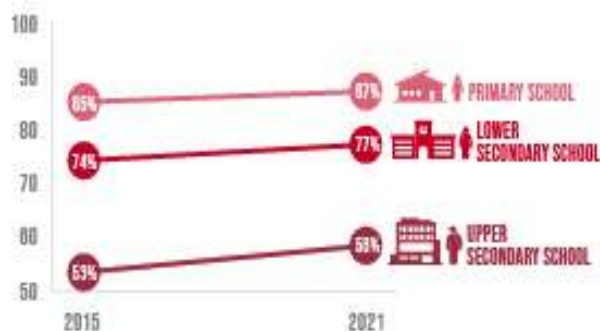


THE PANDEMIC

CAUSED LEARNING LOSSES IN **4 IN 5** OF 104 COUNTRIES STUDIED

PRIMARY AND SECONDARY SCHOOL COMPLETION RATES ARE **RIISING**, BUT THE PACE IS SLOW AND UNEVEN

COMPLETION RATES



LOW- AND LOWER-MIDDLE-INCOME COUNTRIES FACE A NEARLY

\$100 BILLION

ANNUAL FINANCING GAP

TO REACH THEIR EDUCATION TARGETS



Mr. Ashok Kumar Rathour

Adhyaksh

Janbhagidari Samiti Govt. College Jaithari, Anuppur (M.P.)

Forward



Dear Esteemed Members of Government College Jaithari,

As the Adhyaksh of the Janbhagidari Samiti of Government College Jaithari, District Anuppur, Madhya Pradesh, it gives me immense pleasure to present this foreword to our comprehensive College Policy. Since our institution's establishment in 2012, we have been on a journey of growth, learning, and community engagement. This policy document marks another significant milestone in our college's development.

The Janbhagidari Samiti, or Public Participation Committee, plays a crucial role in bridging the gap between the college and the community. Our committee's vision aligns perfectly with the college's mission to provide quality education while fostering a sense of social responsibility among our students.

This College Policy is a testament to our collective efforts to create an institution that not only excels in academics but also prepares students to be responsible citizens. It encompasses various aspects of college life, from academic standards to community outreach programs, reflecting our commitment to holistic education.

I urge all stakeholders - students, faculty, staff, and community members - to embrace this policy wholeheartedly. It is through your active participation and adherence to these guidelines that we can truly realize the potential of our institution.

As we move forward, let us remember that the strength of our college lies in the spirit of 'Janbhagidari' - public participation. This policy is not just a document, but a shared vision for our college's future. Together, we can build an educational institution that serves as a beacon of knowledge and social progress in our region.

I look forward to your continued support and cooperation in implementing this policy and in furthering the growth of Government College Jaithari.

Sincerely,

Mr. Ashok Kumar Rathour
Adhyaksh- Janbhagidari Samiti
Govt. College Jaithari
District Anuppur, (M.P.)



Dr. Ramesh Singh Wate

Principal

Govt. College Jaithari, Anuppur (M.P.)

Forward



Dear Students, Faculty, and Staff,

As the Principal of Government College Jaithari, District Anuppur, Madhya Pradesh, it is my privilege to present our comprehensive College Policy. This document serves as a cornerstone for our institution, outlining our vision, mission, and the guiding principles that shape our academic environment.

Our college policy is designed to foster an atmosphere of academic excellence, personal growth, and social responsibility. It reflects our commitment to providing quality education while nurturing the diverse talents of our students. The policy encompasses various aspects of college life, including academic standards, code of conduct, extracurricular activities, and community engagement.

I encourage all members of our college community to familiarize themselves with this policy. It is not merely a set of rules, but a roadmap for our collective success. By adhering to these guidelines, we create a harmonious and productive learning environment that benefits everyone.

As we move forward, let us embrace these policies with enthusiasm and dedication. Together, we can build a college that not only imparts knowledge but also shapes responsible citizens who will contribute positively to society.

I look forward to working with all of you in upholding the high standards set forth in this policy and in continually striving for excellence in all our endeavors.

Sincerely,

Dr. Ramesh Singh Wate
Principal
Govt. College Jaithari
District-Anuppur (M.P.)

Govt. College Jaithari, Anuppur M.P.

Department of Higher Education M.P.

Incubation Center Policy

Introduction:

The Incubation Center at Govt. College Jaithari is established to nurture entrepreneurial spirit, innovation, and industry-academia collaboration within the District Anuppur, Madhya Pradesh. This policy outlines the framework for the operation and management of the Incubation Center.

Objectives:

To foster a culture of entrepreneurship and innovation among students, faculty, and the local community.

- To provide resources, mentorship, and support to incubate and accelerate startups.
- To facilitate networking opportunities and access to funding for budding entrepreneurs.
- To promote sustainable economic development and job creation in the region.

In-Charge:

Mr. Brijesh Dwivedi is appointed as the In-Charge of the Incubation Center. His responsibilities include overseeing the day-to-day operations, coordinating activities, and providing mentorship to incubated startups.

Management:

The Incubation Center operates under the guidance and supervision of Dr. Ramesh Singh Wate, Principal of Govt. College Jaithari. Dr. Wate provides strategic direction, support, and resources to ensure the effective functioning of the Incubation Center.

Services Offered:

- **Mentorship and Guidance:** Experienced mentors will provide guidance and support to startups in areas such as business planning, marketing, and finance.
- **Networking Opportunities:** Platforms for networking with investors, industry experts, and potential collaborators.

- **Training and Workshops:** Regular workshops, seminars, and training sessions on entrepreneurship, technology, and business development.
- **Infrastructure Support:** Access to co-working spaces, meeting rooms, and necessary facilities for startup development.
- **Funding Assistance:** Assistance in accessing funding opportunities through grants, angel investors, or government schemes.
- **Legal and Administrative Support:** Guidance on legal formalities, intellectual property rights, and administrative processes.

Eligibility Criteria:

The Incubation Center is open to students, alumni, faculty, and community members with innovative ideas or startups. Applicants are required to submit a detailed business plan or project proposal for evaluation.

Selection Process:

Applications will be reviewed by a selection committee comprising experts from academia, industry, and entrepreneurship. Shortlisted candidates will be invited for an interview to assess the feasibility and potential of their ideas or startups.

Duration:

The duration of incubation may vary depending on the nature and stage of the startup. Typically, startups are incubated for a period of 6 months to 2 years.

Monitoring and Evaluation:

Regular monitoring and evaluation of incubated startups will be conducted to track progress, identify challenges, and provide necessary support.

Exit Policy:

Incubated startups may exit the program upon successful commercialization, acquisition, or closure of the venture.

Confidentiality:

The Incubation Center ensures the confidentiality of intellectual property and proprietary information shared by incubated startups.

Code of Conduct:

Incubated startups are expected to adhere to ethical standards, professional conduct, and comply with the rules and regulations of the Incubation Center and Govt. College Jaithari.

Partnerships:

The Incubation Center seeks collaborations with industry partners, government agencies, and other institutions to enhance support for incubated startups and promote entrepreneurship ecosystem development in District Anuppur (M.P.).

This policy framework aims to create a conducive environment for nurturing innovation and entrepreneurship, thereby contributing to the socio-economic growth and development of the region.

Prepared by:- Mr. Brijesh Kumar Dwivedi

Edited by:- Dr. Khushboo Khan

Verified by:- Dr. Neeraj Jaiswal

**Coordinator IQAC
Govt. College Jaithari**

**Principal
Govt. College Jaithari
Anuppur (M.P.) 484330**